



# GEOCON SITE INVESTIGATIONS

Newsletter issue 6 Autumn 2019

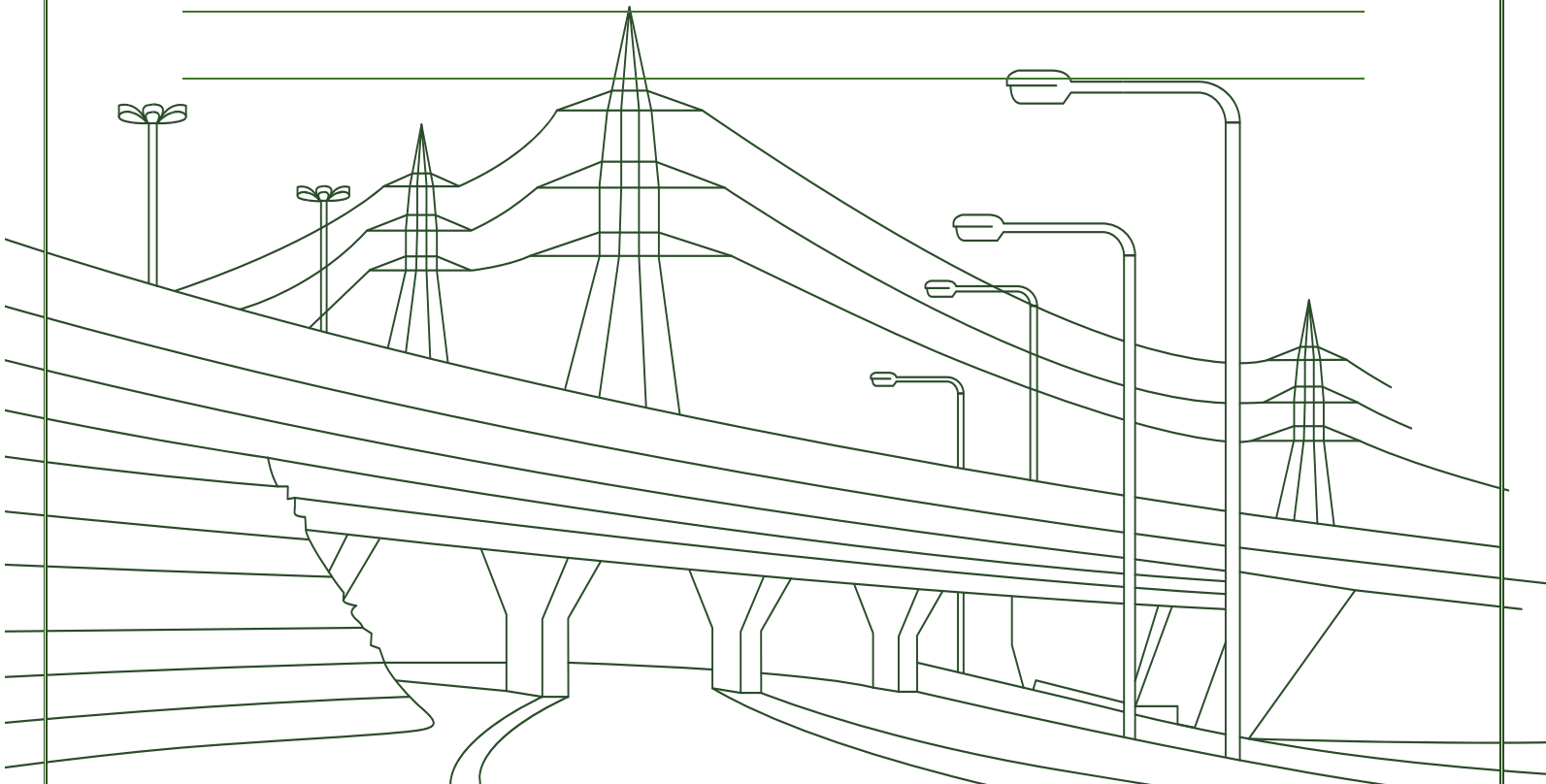


Welcome to our last newsletter of 2019. So, apologies if this seems a bit early, being early November as we write this newsletter, but Happy Christmas and a prosperous New Year everyone.

### What's new.

Firstly, we are pleased to announce the opening of our Sheffield office. We have outgrown our Marple HQ and the two Andrews have volunteered to relocate over to Sheffield. Rumour has it only people willing to be called "Andrew" will work out of that office.

Following the success of last years' link up with Edgehill University we were present at the equivalent event at MMU. However, we have taken it one step further this year and attended actively seeking a gap year placement student. We had a good response and look forward to some interviews in the lead up to the Christmas break.

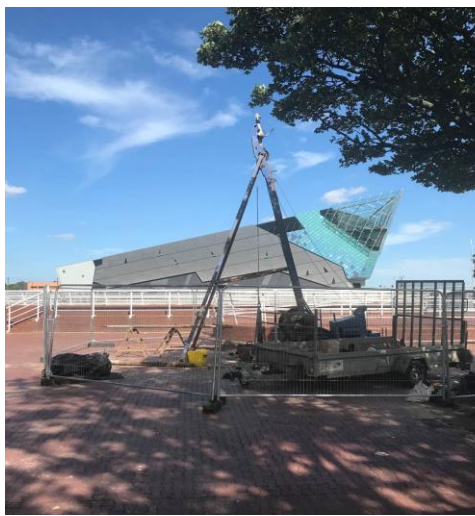




## Meet the team: Sam

Sam is a Geologist/Driller with 7 years' experience. After graduating from the University of Keele, Staffordshire with a BSc (Hons) Geology in June 2011, he immediately started work as an Exploration Geologist working in mineral exploration, primarily in Central and North America. Returning to the UK in December 2014, he started with GeoCon as an Engineering Geologist, remaining in this position until January 2017, when he took control of drilling operations as our Lead Driller and has been thriving in this position ever since.

In his spare time if not playing music then he'll be listening to it instead, an avid fan of anything heavy! He also likes rugby league and can be found supporting his beloved Salford Red Devils, a fan of nearly 20 years.



Working outside The Deep in Hull

## IN OTHER NEWS.....

- If you are a fan of 'The Secret Life of The Zoo' keep an eye out for the new exhibit, the Not-so-shy Geocon Engineer, easily spotted in their high viz plumage. Yes, we have recently been appointed onto Chester Zoo's supply chain providing site investigation services. Our first outing was some bathymetric surveying of several ponds / lakes on site.
- We have also recently gone all 'luvvie' having gained instructions for both Theatr Clwyd near Mold and the Courtyard Theatre in Hereford. Although to be fair, we didn't actually go inside and according to local reactions, Matt's impromptu performance of King Lear outside the Courtyard Theatre was more a Comedy of Errors.
- Our visit to MMU for their 'meet the employer' opportunity hasn't been our only university visit this year, having been instructed for site investigation work at the Royal Holloway campus of the University of London.
- Renewable energy projects are making a comeback. Following our work with E.On projects, we've had several enquiries recently, including investigations for low-head water turbines and an instruction relating to a proposed solar farm in Manchester.

